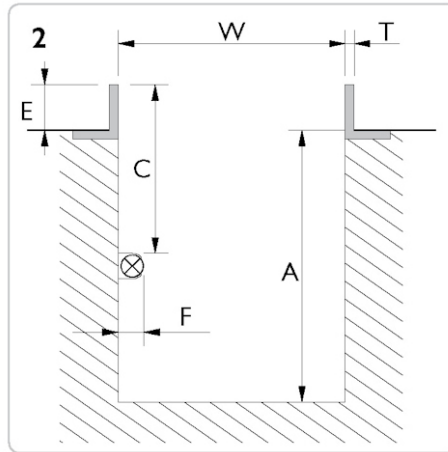
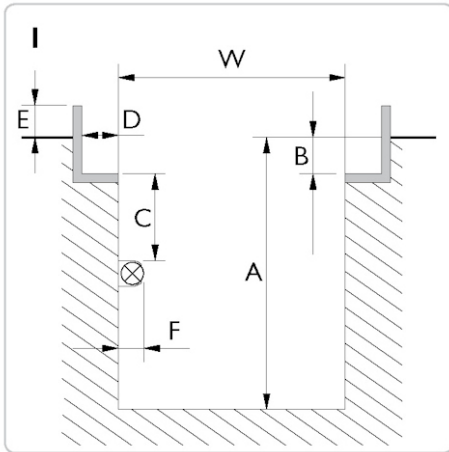


PIT SPECIFICATION FORM

PRODUCT: **FL** - Heavy duty jacking beam 6 t 12 t 16 t 20 t **AB** - Support bridge 20 t
GD - Pit jack 10 t 15 t 20 t
SD - Jacking beam 2 t 2,6 t 4 t



Skitse nr.: _____

Please measure various places along the length of the pit. **Max 12 mm variation between W min og W max. throughout the pit length**

W min. = _____ mm

W max. = _____ mm

A min. = _____ mm

B = _____ mm

D = _____ mm

E = _____ mm

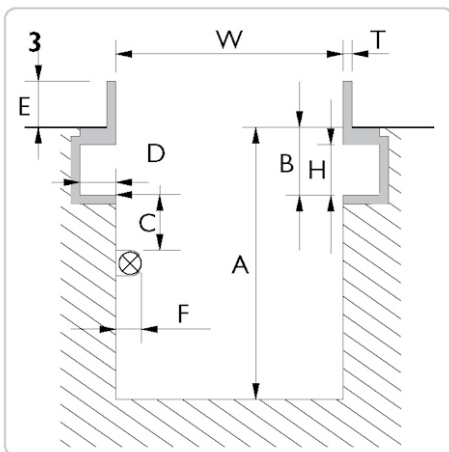
H = _____ mm

T = _____ mm

If the pit is mounted with light or other obstructing parts, please fill out C and F:

C min. = _____ mm

F max. = _____ mm



4 Drawing

Placing of saddle

The placing of top saddle **excluding** cross beam adaptor, safety stand and extensions is required:

above workshop floor _____ mm

levelling with workshop floor

below workshop floor _____ mm

The top of the cylinder will be positioned +/- 50 mm according to requested level

Option

Please note, mounting of different options will increase the min. height:

Cross beam adaptor T4 = 90 mm

Cross beam adaptor T5 = 136 mm

Cross beam adaptor T6 = 90 mm

Safety stand S200 = 65 mm

Rolltype / Rail profile

Conical/tilted Cylindrical/straight

PLEASE NOTE: It is the customer's responsibility that the given measures are correct and sufficient and that the pit is built and anchored to withstand the designated loading.

Date: _____ **Measured by:** _____ **Dealer:** _____ **Signature:** _____